

(JOIN PEOPLEOFARK)

In every corner of The Ark, find reasons to celebrate and embrace the good vibes, bringing smiles to every home. Where the brightest smiles reside, spaces harbouring the brightest smiles.

Edge

The Ark

WHERE EVERY SMILE FINDS A HOME.





The Ark

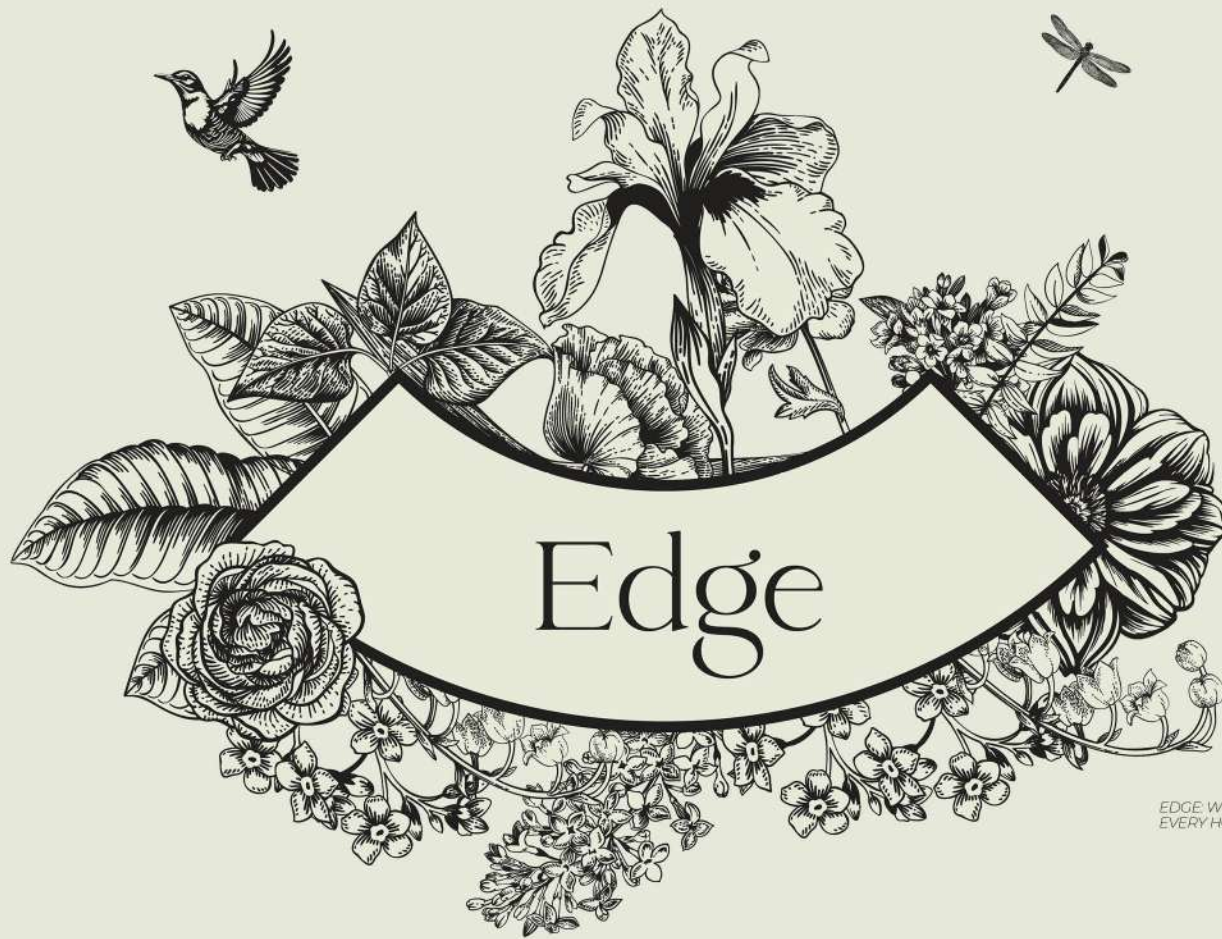
ABOUT THE **ARK** OF EAST

"The Ark of East:

A Visionary Urban Oasis Redefining Modern Living"

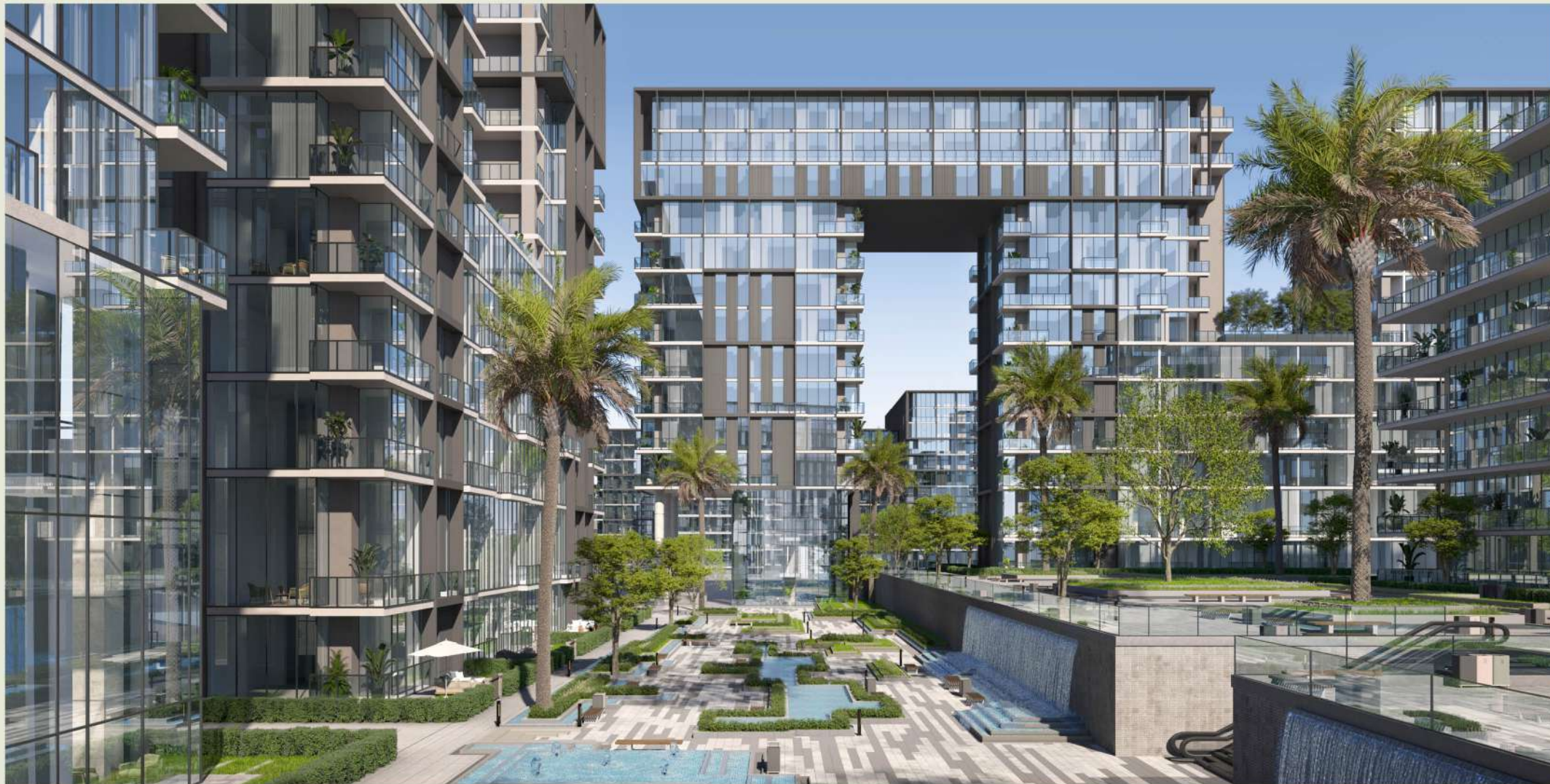
"Welcome to The Ark, the visionary force behind extraordinary living experiences. The Ark is a collaboration between; Organi Group, Abdelmaksoud Group, and Arabella Group. We take pride in crafting not just homes but havens where the essence of artful living is meticulously woven into the fabric of each project. Our journey is a testament to a commitment that transcends the ordinary, embracing the values of craftsmanship, nostalgia, and a genuine celebration of smiles.



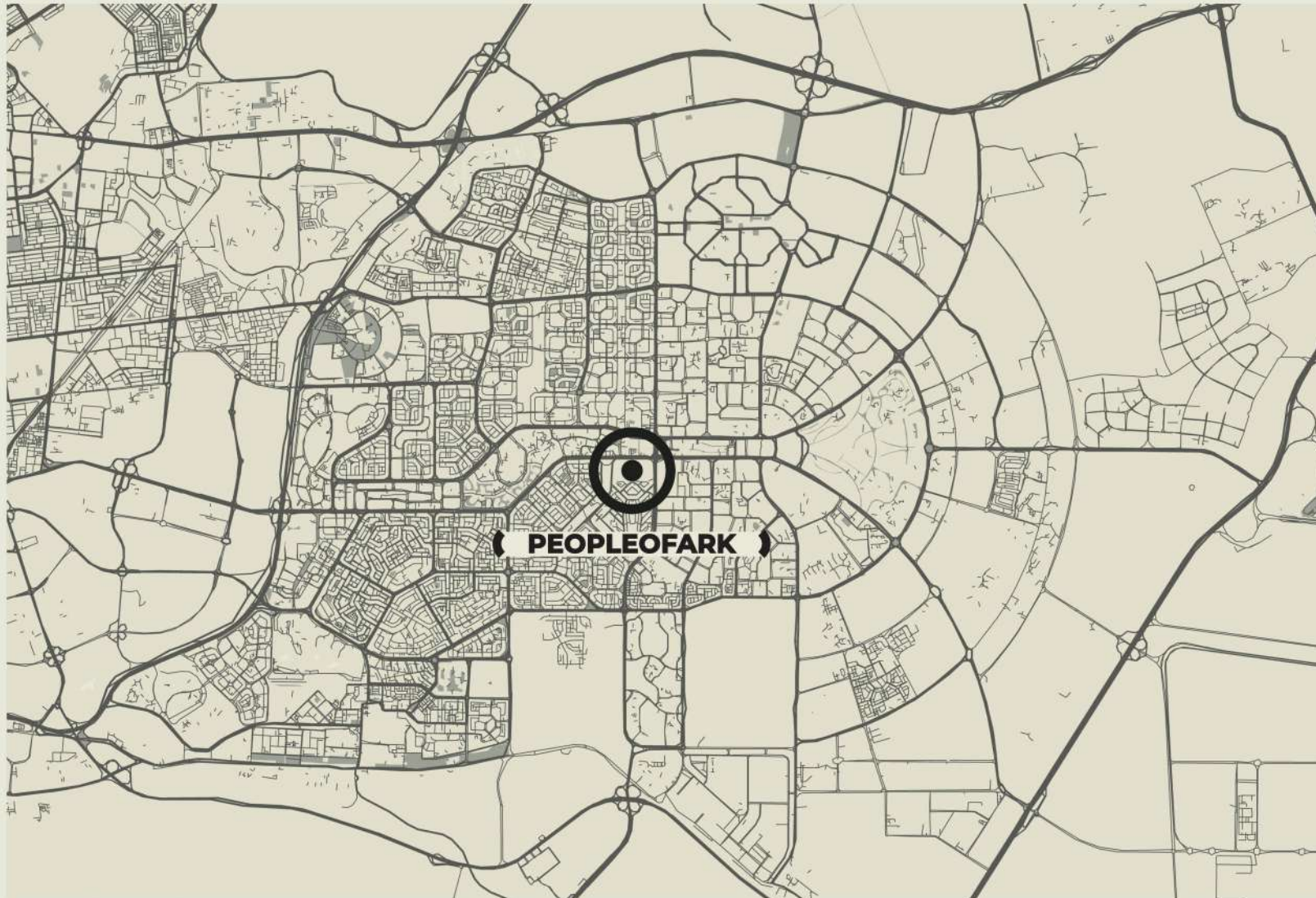


EDGE, WHERE EVERY SMILE HAS A STORY AND EVERY HOME HIDES A HUG.

The Ark







LOCATION

The Ark is strategically positioned on south 90th Road, ensuring swift and easy connections to key areas in Cairo.

Distance from optimal locations:

- FUE: 2.16 km (1.34 mi)
- AUC: 2.83 km (1.76 mi)
- GUC: 4.87 km (3.03 mi)

- Ring Road: 6.73 km (4.18 mi)
- Sokhna Road: 6.30 km (3.92 mi)
- Suez Road: 6.99 km (4.34 mi)



"EDGE -
WHERE ART,
NATURE & SMILES
RESIDE."



ABOUT US-

"Welcome to Edge, an invitation to immerse yourself in the soothing embrace of nature, where every detail has been thoughtfully curated to harmonize with the environment".

At Edge, our commitment is to create a unique living experience. Each element is carefully designed to celebrate the beauty of nature, offering you a home that seamlessly integrates with the surrounding landscapes. Here, the air is filled with tranquility, and the ambiance is set for **a lifestyle that cherishes every moment.**





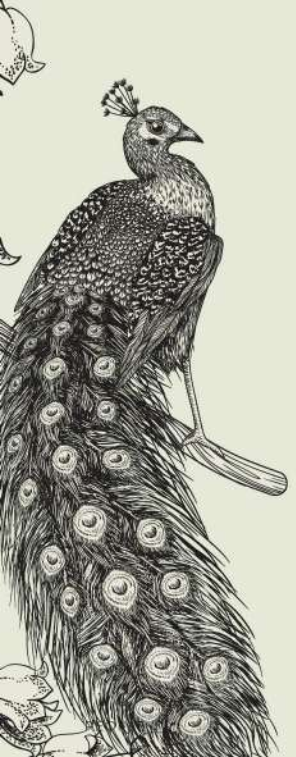
RESIDENTIAL PHENOMENA BY **THE ARK**



Edge







KEYPLAN

Edge

CLIF®/F ADMINISTRATIVE/ COMMERCIAL

Edge RESIDENTIAL

WORLD CLASS HOTEL

COMMERCIAL STRIP

CLIFF

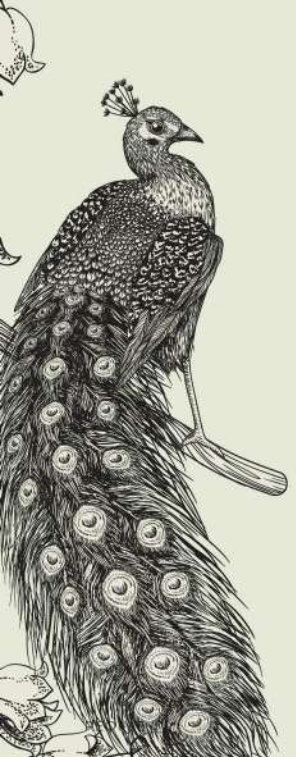
EDGE

CLIFF



KEYPLAN

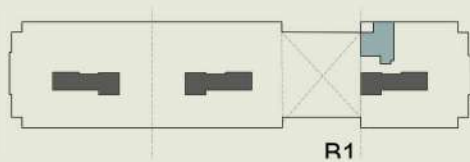
WORLD CLASS HOTEL



FLOORPLANS

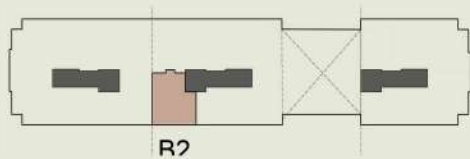
Edge

SPACE	DIMENSIONS
FOYER	1.50m X 1.50m
KITCHEN	2.70m X 2.85m
BEDROOM	4.20m X 3.70m
BALCONY	2.40m X 2.20m
LIVING AREA	2.30m X 2.30m
GARDEN	3.00m X 6.30m
BATHROOM	1.70m X 2.65m



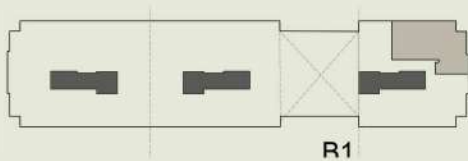
STUDIO B1-GR-01

SPACE	DIMENSIONS
FOYER	1.40m X 1.90m
KITCHEN	2.20m X 2.25m
RECEPTION	3.70m X 4.05m
DINING AREA	1.60m X 4.5m
GARDEN	2.35m X 8.60m
GUEST TOILET	2.20m X 1.20m
MASTER SUITE	3.60m X 4.05m
MASTER SUITE BATHROOM	2.40m X 1.65m



1 BEDROOM
B2-GR-06

SPACE	DIMENSIONS
FOYER	3.30m X 1.80m
CORRIDOR	1.10m X 4.00m
KITCHEN	4.15m X 2.80m
BALCONY	2.45m X 2.40m
RECEPTION	5.55m X 5.70m
GARDEN	3.00m X 14.70m
DINING AREA	4.25m X 3.10m
GUEST TOILET	2.10m X 1.10m
BEDROOM 01	3.60m X 4.10m
BATHROOM 01	2.10m X 2.20m
MASTER SUITE	3.60m X 4.05m
MASTER SUITE DRESSING	1.10m X 2.25m
MASTER SUITE BATHROOM	2.10m X 2.85m



2 BEDROOM B1-GR-02

SPACE	DIMENSIONS
FOYER	3.90m X 2.05m
CORRIDOR	1.20m X 6.20m
KITCHEN	3.50m X 2.80m
RECEPTION	6.20m X 5.60m
GARDEN	2.35m X 10.60m
BALCONY	2.45m X 2.50m
DINING AREA	4.05m X 3.20m
GUEST TOILET	2.00m X 1.20m
BEDROOM 01	3.60m X 4.15m
BEDROOM 02	3.60m X 4.10m
BATHROOM 01	2.00m X 2.70m
MASTER SUITE	3.60m X 5.65m
MASTER SUITE DRESSING	2.40m X 2.10m
MASTER SUITE BATHROOM	2.40m X 2.05m
MAID'S BEDROOM	2.00m X 1.75m
MAID'S BATHROOM	2.00m X 1.75m

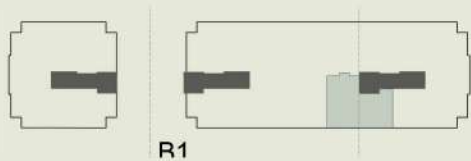


3 BEDROOM B1-GR-03

SPACE	DIMENSIONS
FOYER	2.85m X 1.50m
DINING AREA	3.70m X 3.75m
RECEPTION	6.45m X 4.50m
GUEST TOILET	1.80m X 2.10m
KITCHEN	3.60m X 4.05m
STORAGE	1.20m X 1.70m
MAID'S BEDROOM	2.00m X 2.25m
MAID'S BATHROOM	1.25m X 2.25m



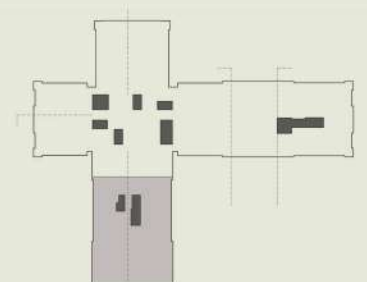
SPACE	DIMENSIONS
FOYER	3.25m X 1.50m
LIVING AREA	3.90m X 3.65m
BEDROOM 01	3.60m X 4.05m
BATHROOM 01	1.80m X 2.10m
BEDROOM 02	3.60m X 4.10m
MASTER SUITE	3.60m X 4.05m
MASTER SUITE DRESSING	2.40m X 3.75m 1.20m X 2.25m
MASTER SUITE BATHROOM	2.00m X 2.25m



DUPLEX B1-DUP-04

SPACE	DIMENSIONS
FOYER	3.75m X 4.45m
RECEPTION	12.30m X 6.45m
GUEST TOILET	1.30m X 2.00m
KITCHEN	9.15m X 5.70m
DINING AREA	4.15m X 4.35m
MASTER BEDROOM 01	4.10m X 4.35m
MASTER DRESSING 01	2.25m X 2.00m
MASTER BATHROOM 01	1.75m X 2.00m
MASTER BEDROOM 02	4.10m X 4.35m

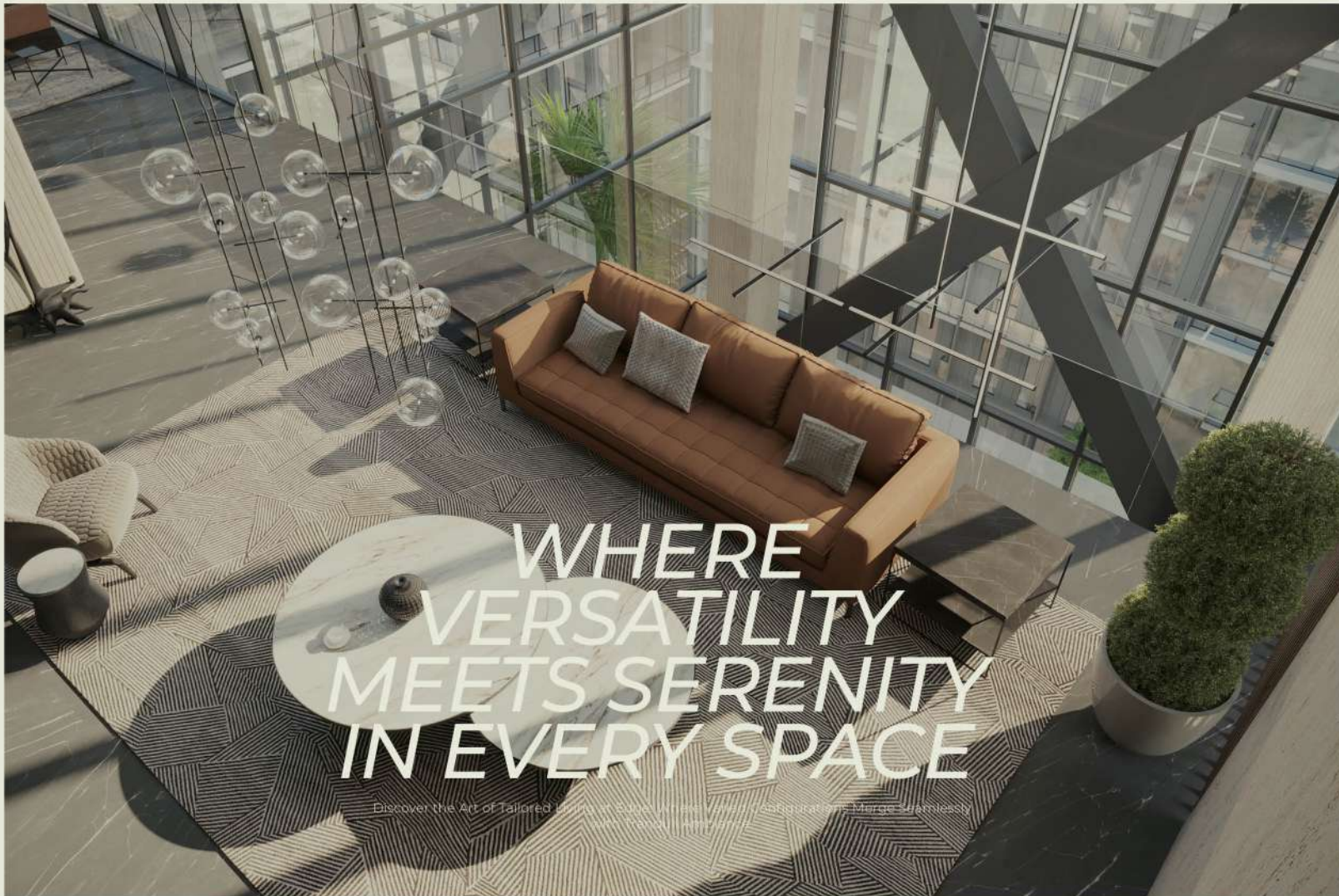
MASTER DRESSING 02	2.25m X 2.00m
MASTER BATHROOM 02	1.75m X 2.00m
MASTER BEDROOM 03	4.10m X 4.35m
MASTER DRESSING 03	2.25m X 2.00m
MASTER BATHROOM 03	1.75m X 2.00m
MASTER SUITE	4.95m X 6.45m
MASTER SUITE DRESSING	2.25m X 2.30m
MASTER SUITE BATHROOM	2.50m X 3.75m
MAID'S BEDROOM	2.25m X 2.60m
MAID'S BATHROOM	1.20m X 1.50m
LIVING AREA	8.35m X 6.45m



PENTHOUSE C5-09PH

EDGE LIVING

"Our diverse range of apartment types cater to varied lifestyles, ensuring a perfect fit for every resident."



WHERE
VERSATILITY
MEETS SERENITY
IN EVERY SPACE

Discover the Art of Tailored Living at Edge With Various Configurations Merge Seamlessly
With Work & Playtime

BEHIND THE GLASS

At Edge, we believe in bringing the beauty of the outdoors to your doorstep. To achieve this seamless connection with nature, all our facades are elegantly crafted with expansive glass panels.



OF ARK



EDGE: AMENITIES LANDSCAPING



WALKING TRAILS

OUTDOOR SEATING
AREAS

BOTANICAL ZONES



EDGE: AMENITIES LANDSCAPING



TRIPLE HEIGHT
ENTRANCE

PRIVATE SWIMMING
POOL

24/7 CCTV
SURVEILLANCE



EDGE: AMENITIES LANDSCAPING



STORAGE ROOMS

MULTIPLE ELEVATORS

SKYLIGHTS FOR ALL BUILDINGS



EDGE: AMENITIES

BIGGER PICTURE



PET OASIS

SMART LIVING HUB

EXPRESS FITNESS



EDGE: AMENITIES BIGGER PICTURE



CONCIERGE SERVICES

DIRECT ACCESS TO
COMMERCIAL STRIP

COMMUNITY
SERVICE APP





*DISCOVER SERENITY
IN EVERY SHADE –
WHERE IMMACULATE
LANDSCAPES PAINT
THE PERFECT
BACKDROP FOR
INSPIRED LIVING AT
EDGE.”*



Amidst the vibrant urban tapestry of New Cairo, Edge emerges as a haven where nature takes center stage. Our commitment to providing a tranquil and harmonious living environment is embodied in the lush landscapes that grace every corner.





OUR RESIDENCES
ARE BOTH FULLY
AUTOMATED BY
VIMAR ITALY &
SERVICED BY A
WORLD CLASS HOTEL

Edge



WHERE JOY MEETS ELEGANCE, EVERY CORNER OF EDGE IS A CELEBRATION OF LIFE'S FINEST MOMENTS.

VIMAR ITALY



At Edge, we are proud to integrate Vimar's premium Italian electrical systems into our homes. Vimar is renowned for its superior quality, innovative design, and cutting-edge technology. Residents will experience the best in safety, functionality, and elegance, enhancing the overall living experience in every home.





KIMPTON BY IHG

Nestled within the heart of Cliff, the Kimpton Hotel and Restaurants stand as a beacon of luxury and hospitality Managed by the renowned IHG brand, this esteemed hotel brings a legacy of excellence to the elegant landscape of Cliff.

With a commitment to exemplary service and unparalleled guest experiences, with a collection of world-class restaurants offering culinary delights and an array of amenities tailored to elevate every stay, Kimpton Hotel embodies the pinnacle of hospitality, ensuring each guest leaves with cherished memories and a desire to return.



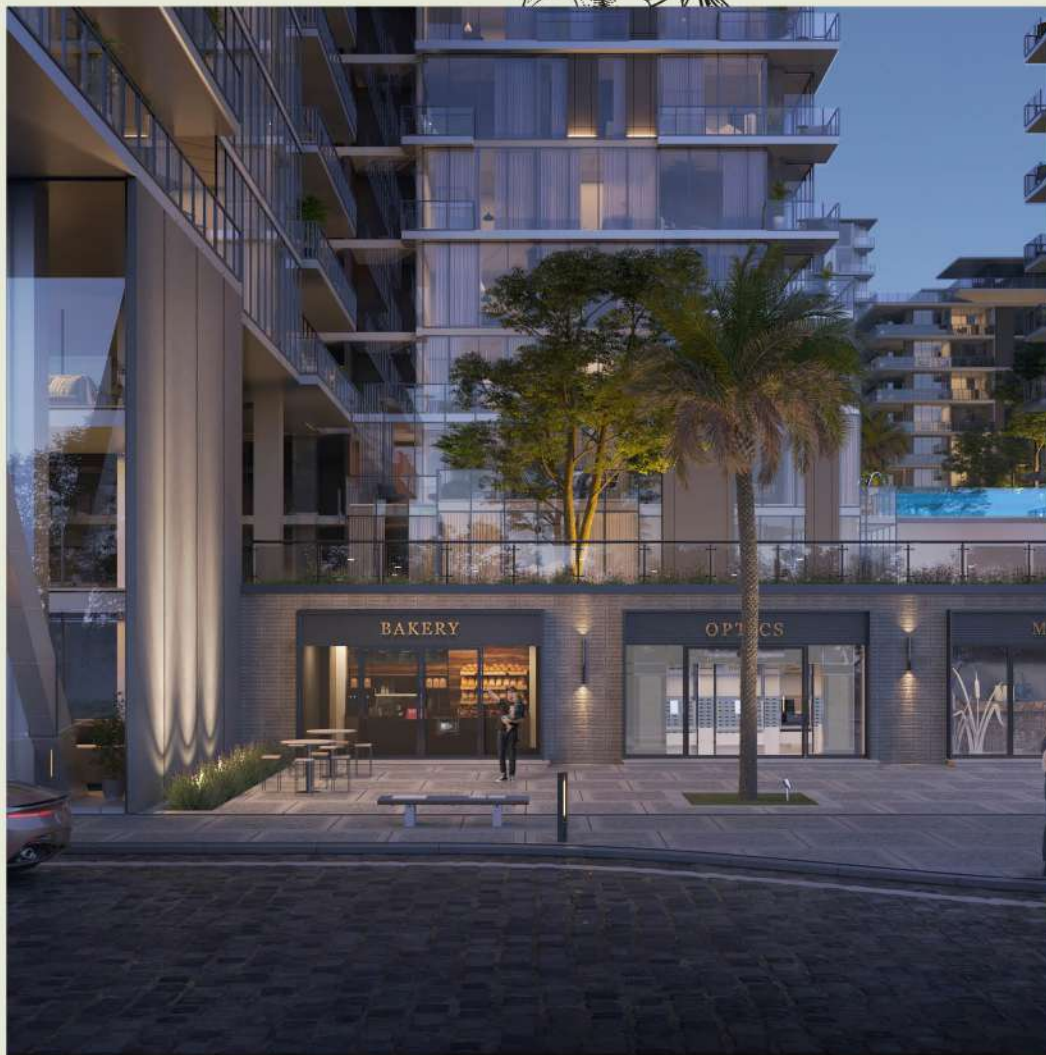


EDGE: CRAFTING CONNECTIONS, FOSTERING COMMUNITY HARMONY

WHERE DISTINCT RESIDENCES UNITE IN COMMUNITY SYMPHONY.



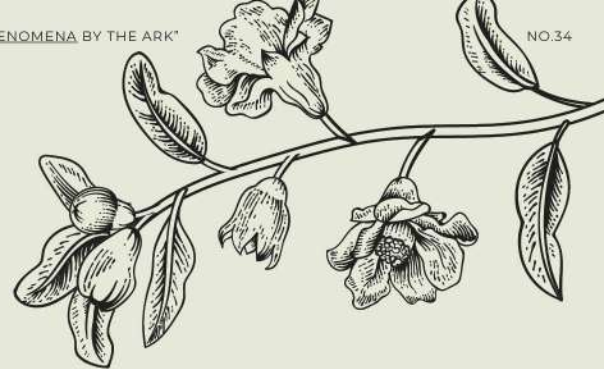
At Edge, the concept of community is founded on fostering meaningful connections among residents, while each residence maintains its individuality, the intentional design of communal areas, parks, and gathering spots ensures that Edge isn't just a collection of buildings but a united community, where residents come together to create a vibrant and harmonious living environment.





CORES & ELEVATORS

At Edge, each elevator core is meticulously crafted to serve only two apartments per floor, ensuring an exclusive and private transit experience for residents. The elevator cores are equipped with state-of-the-art technology, ensuring smooth and swift transitions between floors while maintaining a sense of individuality for each residence. Setting the tone for the luxurious living experience within Edge.





At Edge, safety is not just a priority; it's an integral part of our commitment to providing residents with peace of mind. Our comprehensive security measures are seamlessly woven into the fabric of the community to create a secure and protective living environment. From controlled access points to vigilant surveillance systems, every aspect of Edge is designed to ensure the safety and well-being of our residents.



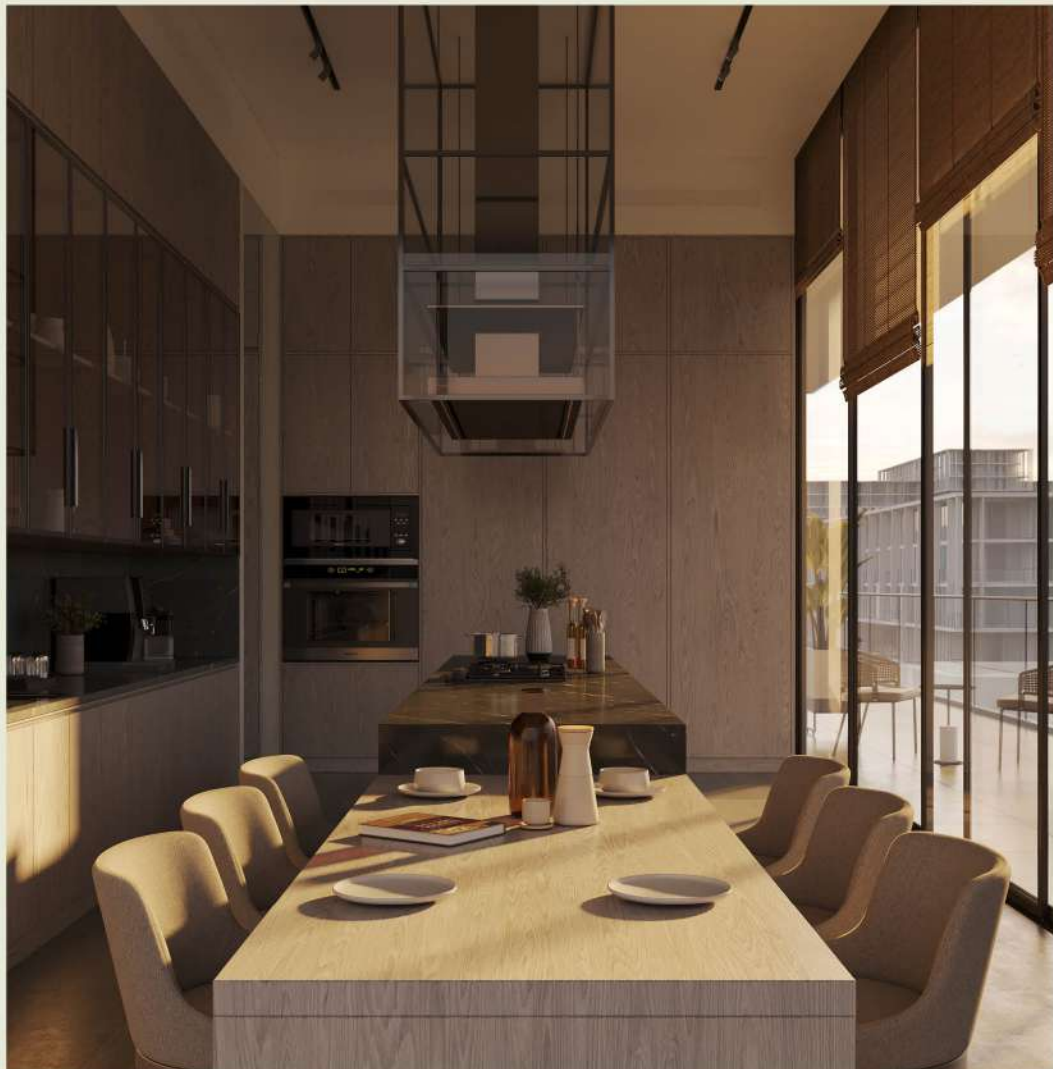
A NEW STANDARD – YOUR HAVEN,
SECURE AND SOUND.

















Arabella

BOARD MEMBERS



INVESTORS



BUSINESS PARTNERS



CONSULTANTS

LEAD CONSULTANT & ARCHITECT



PROJECT MANAGEMENT CONSULTANCY



TIS AND ROADS CONSULTANT



STRUCTURE DESIGNER



ELECTRICAL CONSULTANT



INTERIOR DESIGN CONSULTANT



SUPERVISION CONSULTANT



HVAC CONSULTANT



ANIMATION VISUAL CONSULTANT



PLUMBING AND FIREFIGHTING CONSULTANT



BRAND CONSULTANT

LONGEBLACK

CONTRACTORS



Arabella



CLIFF



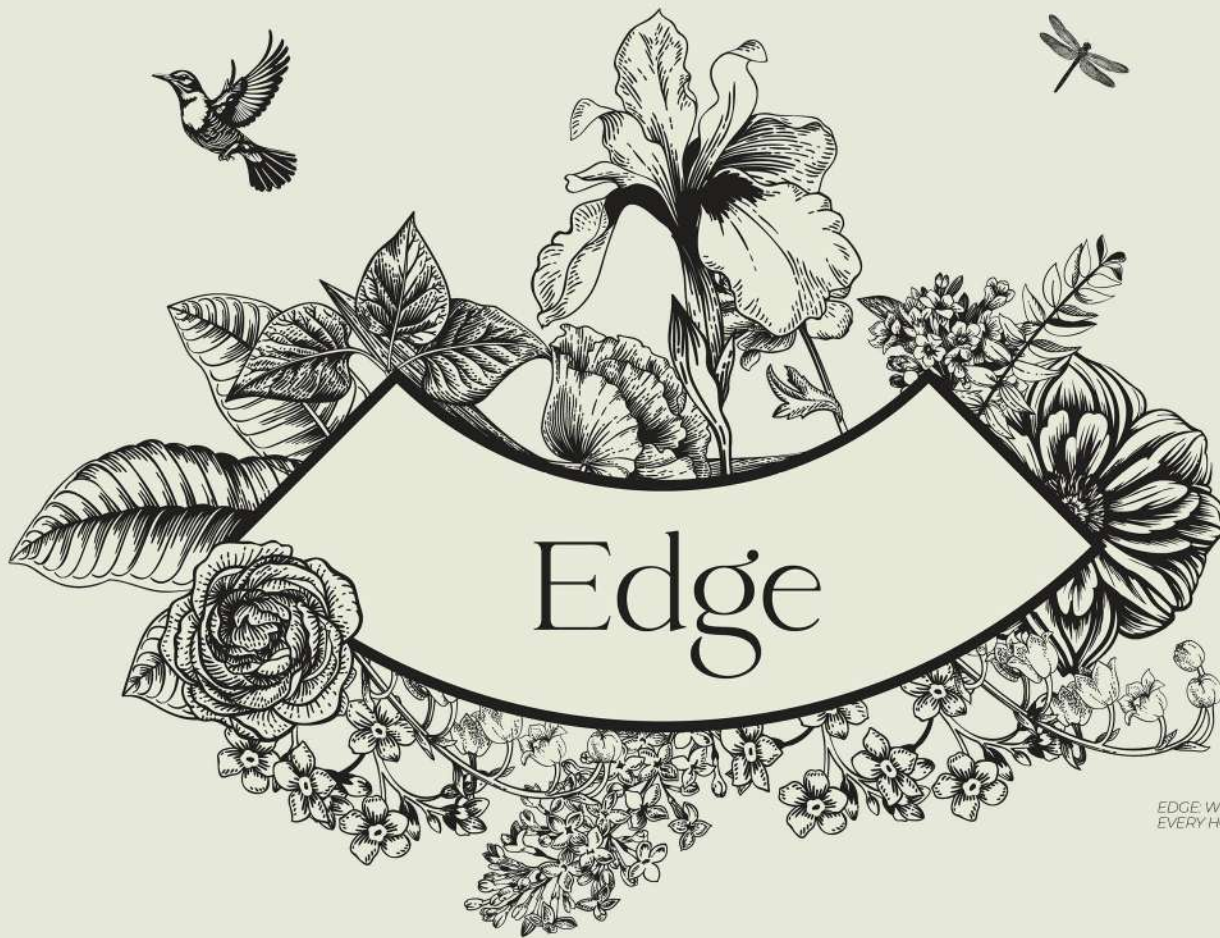
CLIFF, WHERE INNOVATION THRIVES AND INSPIRATION KNOWS NO BOUNDS.
Step into a world where modern architecture meets limitless possibilities, and every corner sparks creativity. Discover a vibrant community where dreams take flight and the skyline is just the beginning.



® **CLIFF BY THE ARK /**
at NEW CAIRO,
EGYPT.



[20] LASTING IMPRESSIONS
[24] / A WORLD OF AMENITIES



EDGE, WHERE EVERY SMILE HAS A STORY AND EVERY HOME HIDES A HUG.

The Ark